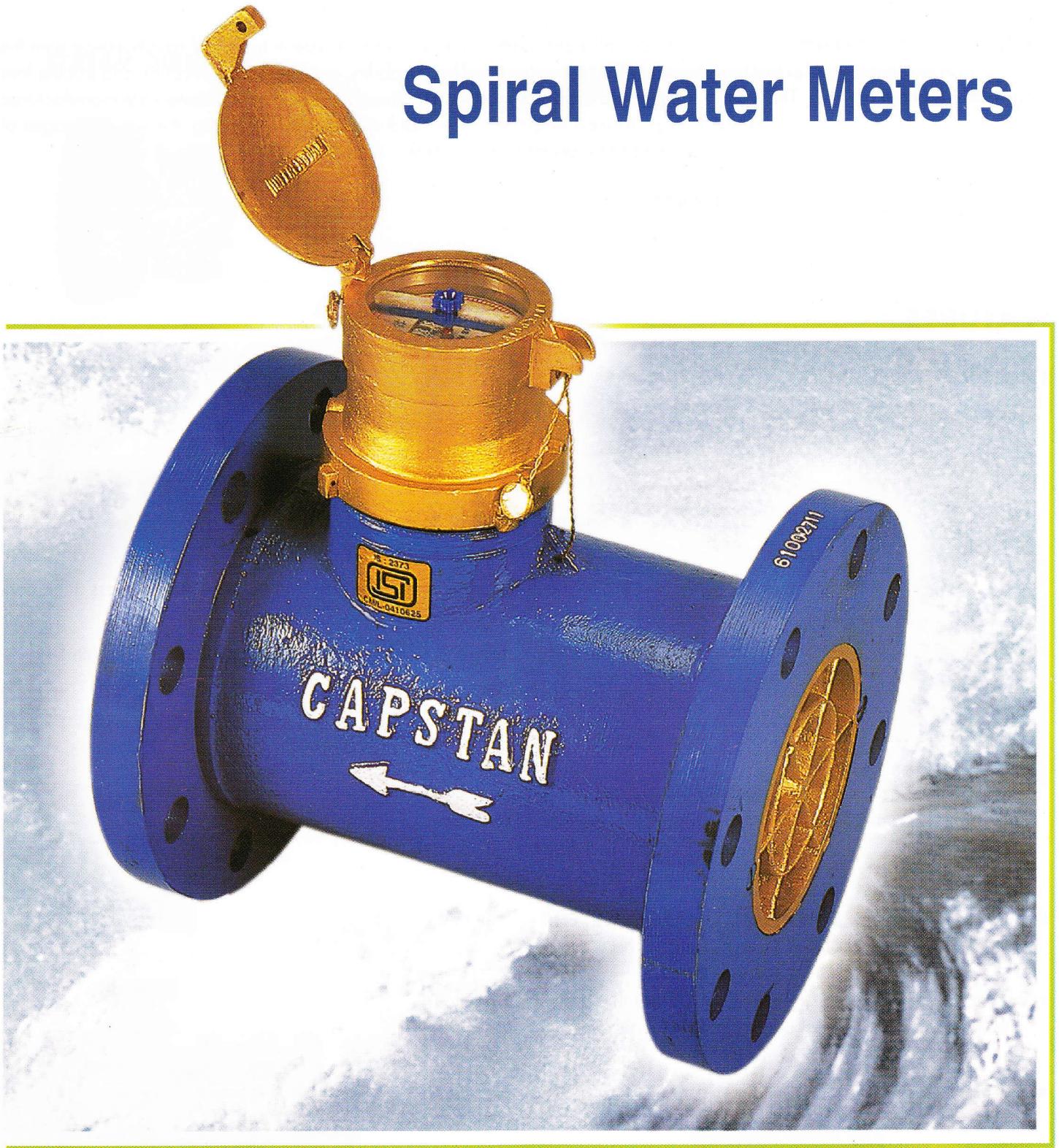


Capstan

Spiral Water Meters



Capstan - The hallmark for quality and modern technology

INTRODUCTION

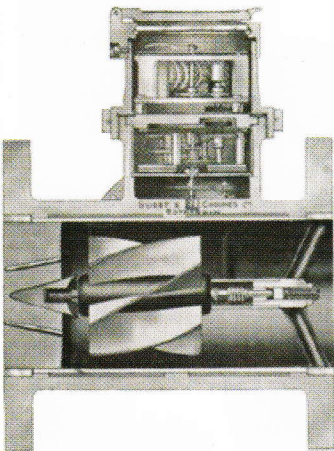
CAPSTAN WATER METERS are manufactured in all sizes, both Domestic and Bulk type in technical collaboration with the world-renowned companies for last four decades. These are designed for durability, accuracy of registration and trouble free service for a number of years. The factory is equipped with most modern machines and equipments. Meters are manufactured under the skilled supervision of expert foreign trained engineers. The rigid quality control during the various stages of manufacture in the factory allows only a top class product entering the market.

All meters conform to IS 2373 and ISO 4064/1

FEATURES

ENCLOSED TYPE SPIRAL WATER METERS

(Available in sizes 50-mm to 600-mm)

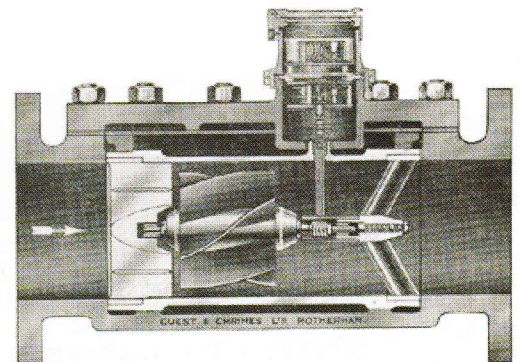


- Specially designed to meet the demand of reliable meters, capable of measuring large quantities of water, where little loss of head is allowed.
- The meter casing is of graded cast iron and houses the press fitted non-removable liner made of brass.
- Tested to withstand a maximum hydrostatic pressure of 16 kg/cm².
- Suitable for a maximum temperature of 45° C

INTERCHANGEABLE "SPIRAL" WATER METERS

(Available in sizes 200-mm to 600-mm)

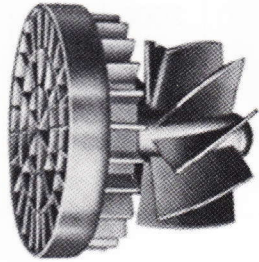
- Special advantage in this type of meter is that the working parts along with the Liner can be taken out, without removing the outer casing from the pipe line.
- The meter casing is of graded cast iron and has a removable cover, which after detaching allows the brass liner assembly, containing the internal mechanism to be removed.
- Tested to withstand a maximum hydrostatic pressure of 16 kg/cm².
- Suitable for a maximum temperature of 45° C.



Capstan

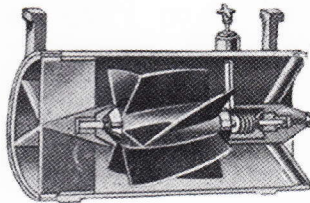
CONSTRUCTION

STREAM DIRECTOR



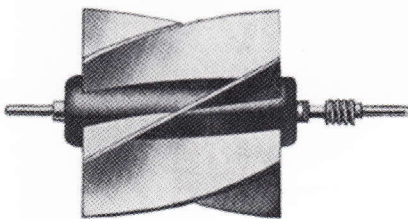
The stream director is of brass and is fitted at the inlet end to correct eddies. This enables the meter to be used in any position i.e. horizontal, vertical or oblique.

LINER ASSEMBLY



The liner assembly is made of brass and is so constructed that it may be withdrawn from the meter body with ease.

SPIRAL IMPELLER ASSEMBLY



Helical shaped impeller is made of special plastic and mounted on solid stainless steel shaft and has a worm gear to transmit the motion. It is self-balanced.

DIRT BOX

(Available in sizes 50-mm to 600-mm)

Dirt boxes with strainer made of brass/stainless steel can be fitted at the inlet side of the water meters as an additional safeguard and protection of the meter mechanism from unwanted particles, stones etc.



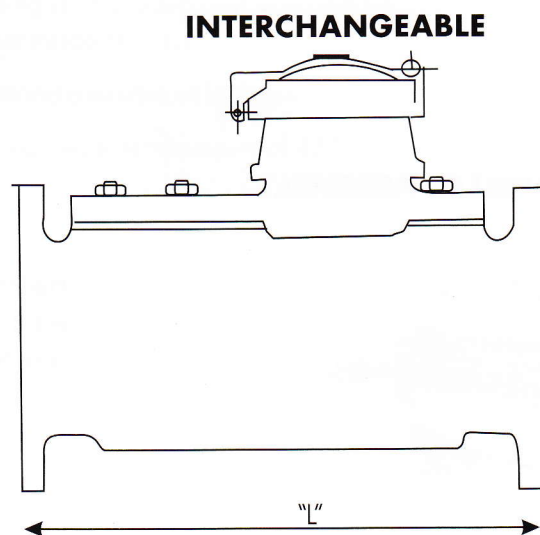
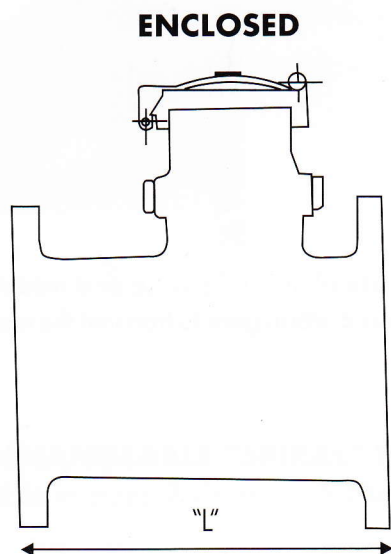
TECHNICAL DATA

PERFORMANCE TABLE AS PER IS: 2373 AND ISO: 4064/1 CLASS 'A'

Size of Meter		mm	50	80	100	150	200	250	300	400	500	600
Q _{max.}	Maximum peak flow	±2% m ³ /h	30	80	120	300	500	800	1200	2000	3000	5000
Q _n	Nominal flow	±2% m ³ /h	15	40	60	150	250	400	600	1000	1500	2500
Q _t	Transitional flow	±2% m ³ /h	4.5	12	18	45	75	120	180	300	450	750
Q _{min}	Minimum flow	±5% m ³ /h	1.2	3.2	4.0	12	20	32	48	80	120	200

DIMENSIONS

Size Of Meter		mm	50	80	100	150	200	250	300	400	500	600
Overall Length Enclosed	L mm		200	200	250	300	350	450	500	600	800	1000
Weight Enclosed	Kg.		10	16	21	34	67	84.5	100	190	270	490
Overall Length Interchangeable	L mm											
Weight Interchangeable	Kg.											



CAPSTAN METERS (INDIA) LTD.

ISO 9001:2000 COMPANY

WORKS AND SALES OFFICE: Tonk Road, Jaipur-302018

Ph. (0141) -2551294,2551470 Fax: (0141) -2545076 Email:capstanmeters@eth.net

REGD. OFFICE: 52, Janpath, New Delhi-110001, Ph. (011)-23321098,23312227

Fax: (011)-23324769, Email: capstan@jaidrinks.com

Mumbai Office: 104,Marine Chambers, New Marine Lines, Mumbai-400020 Tele-fax-(022)-22034101